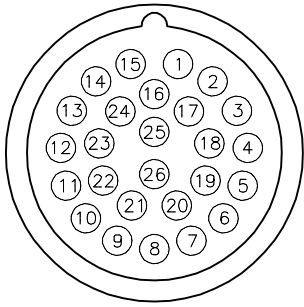


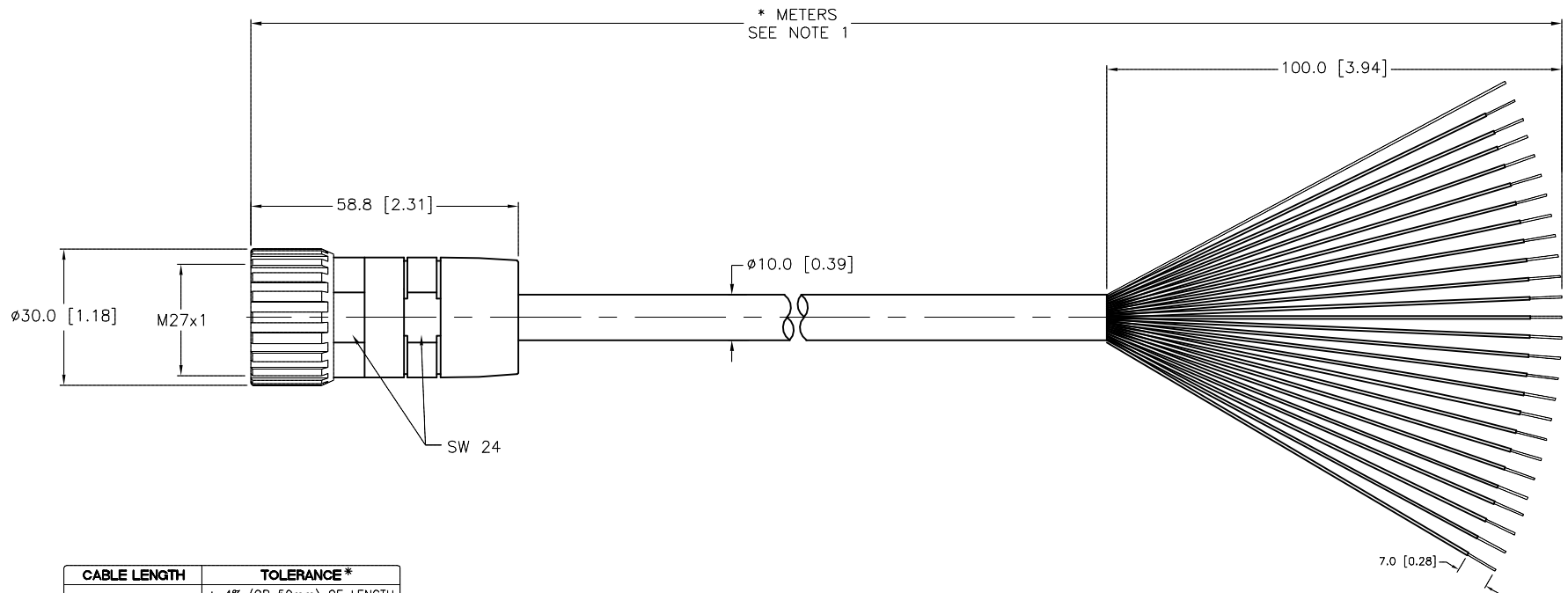
MALE END VIEW



- |                  |                   |
|------------------|-------------------|
| 1 = BROWN        | 15 = BLUE         |
| 2 = WHITE/GREY   | 16 = BLACK/GREY   |
| 3 = BLUE/GREY    | 17 = BROWN/ORANGE |
| 4 = BROWN/GREY   | 18 = WHITE/ORANGE |
| 5 = BLACK/YELLOW | 19 = BLACK/ORANGE |
| 6 = WHITE/YELLOW | 20 = BLACK/GREEN  |
| 7 = BLUE/YELLOW  | 21 = WHITE/GREEN  |
| 8 = BROWN/YELLOW | 22 = BLUE/GREEN   |
| 9 = BLACK/RED    | 23 = BROWN/GREEN  |
| 10 = WHITE/RED   | 24 = BLUE/ORANGE  |
| 11 = BLUE/RED    | 25 = GREEN/YELLOW |
| 12 = BROWN/RED   | 26 = N/C          |
| 13 = BLACK       |                   |
| 14 = WHITE       | DRAIN/SHIELD      |

SPECIFICATIONS

CONTACT CARRIER MATERIAL	NYLON or PBT
CONTACT MATERIAL/PLATING	BRASS/GOLD
CONNECTOR HOUSING MATERIAL/PLATING	BRASS/NICKEL
GASKET	RUBBER (NBR or FPM)
RATED CURRENT [A]	3.0 A
RATED VOLTAGE [V]	150 V
OUTER JACKET MATERIAL/COLOR	PVC/YELLOW
CONDUCTOR INSULATION MATERIAL	PVC
NUMBER OF CONDUCTORS [AWG]	25x22 AWG
DRAIN/SHIELD	22 AWG DRAIN/POLYESTER FOIL SHIELD
PROTECTION CLASS	IEC IP67
TEMPERATURE	-40°C TO +105°C (-40°F TO +221°F)



CABLE LENGTH	TOLERANCE*
ALL LENGTHS	+ 4% (OR 50mm) OF LENGTH - 0% (OR 0mm) OF LENGTH WHICHEVER IS GREATER
STRIP LENGTH	TOLERANCE*
0-7mm	±0.5mm
8-29mm	±1.0mm
30-49mm	±2.0mm
50-69mm	±3.0mm
70-100mm	±4.0mm
OVER 100mm	±5.0mm

\* UNLESS OTHERWISE SPECIFIED

NOTES:

1. "\*" INDICATES LEAD LENGTH IN METERS. CONTACT TURCK TO ORDER SPECIFIC LENGTHS.

SOURCE DRAWING - FOR REFERENCE ONLY

RELATED DOCUMENTS 1. 2. 3. 4.	3RD ANGLE PROJECTION 	THIS DRAWING IS CONFIDENTIAL AND THE PROPERTY OF TURCK INC. USE OF THIS DOCUMENT WITHOUT WRITTEN PERMISSION IS PROHIBITED.		3000 CAMPUS DRIVE MINNEAPOLIS, MN 55441 1-800-544-7769 (763) 553-7300 (763) 553-0708 fax www.turck.us	
		DRFT DD	DATE 12/19/03	DESCRIPTION DS 26-631-*	
MATERIAL SEE SPECIFICATIONS	ALL DIMENSIONS DISPLAYED ON THIS DRAWING ARE FOR REFERENCE ONLY	APVD DD	SCALE 1=1.5		
FINISH SEE SPECIFICATIONS		UNIT OF MEASUREMENT MILLIMETER [ INCH ]		DO NOT SCALE THIS DRAWING	
		CONTACT TURCK FOR MORE INFORMATION			
				SHEET 1 OF 1	

D	UPDATE STRIP LENGTH	NF	03/09/18	64543
REV	DESCRIPTION	BY	DATE	ECO NO.